

PROTECT OPEN SPACES AND SUPPORT RECREATION

In many places throughout the U.S., **cattle protect open space and coexist with outdoor recreationists** who fish, hike, camp and more!^{1,2}

MAXIMIZE USE OF LAND

Cattle grazing conserves and regenerates land by making use of rocky, steep, arid terrain **that cannot be used for crop production**. Cattle are the **perfect land conservationists!**³

REDUCE CARBON FOOTPRINT

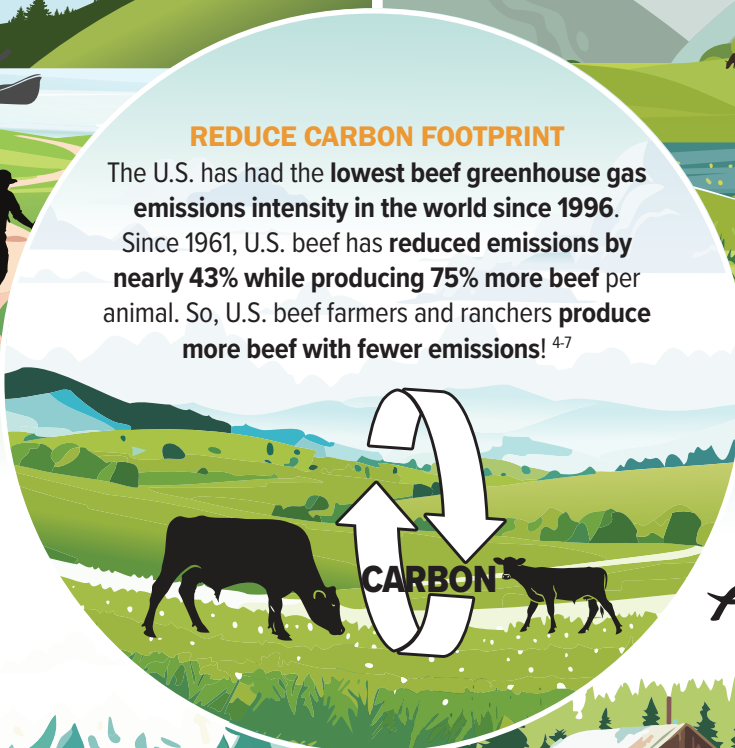
The U.S. has had the **lowest beef greenhouse gas emissions intensity in the world since 1996**. Since 1961, U.S. beef has **reduced emissions by nearly 43% while producing 75% more beef per animal**. So, U.S. beef farmers and ranchers **produce more beef with fewer emissions!**^{4,7}

PROVIDE WILDFIRE PREVENTION

Cattle grazing **prevents overgrowth of forages that act as fuel for wildfires**.⁸ Cattle grazing is a **critical and low-cost part of the solution** to proactively fighting and suppressing wildfires!

PROTECT PLANT AND ANIMAL BIODIVERSITY

Many plants and wildlife species—including a growing number of endangered species—**depend on the grazing and management practices of beef farmers and ranchers** to survive and thrive!¹



References

1. Brunson, MW and L. Huntsinger. 2008. Ranching as a Conversation Strategy: Can Old Ranchers Save the New West? *Rangeland Ecology & Management* 61(2): 137-147.
2. USDA-NRCS. 1995. *Grazing Lands. RCA Issue Brief #6*. Found on: [Grazing Lands | NRCS \(usda.gov\)](https://www.nrcs.usda.gov/grazing-lands/).
3. USDA-ERS. 2021a. Economic Research Service using data from the Major Land Use data series. Available at: <https://www.ers.usda.gov/data-products/major-land-uses.aspx>
4. Beef Research. 2024. *Quick Stat Calculations - Sustainability Research: Statistics on US Improvements in Beef Production and Emission Intensity*. <https://www.beefresearch.org/programs/beef-sustainability>.
5. UN FAO. 2021. *FAOSTAT Database - Food and agricultural data*. Available at: <http://www.fao.org/faostat/en/#home>
6. USDA-NASS. 2021. *Quick Stats Tools*. Available at: https://quickstats.nass.usda.gov/results/3AC161F7-F361-3A66-9B6C-2E1220FEBF52?pivot=short_desc
7. Herrero M, et al. Biomass use, production, feed efficiencies, and greenhouse gas emissions from global livestock systems. *Proc. Natl. Acad. Sci.* 2013. 110: 20888-20893
8. Davies et al. 2015. Winter grazing can reduce wildfire size, intensity, and behavior in a shrub-grassland. *International Journal of Wildland Fire*. https://owri.oregonstate.edu/sites/agcid7/files/eoarc/attachments/854_winter_grazing_2015.pdf